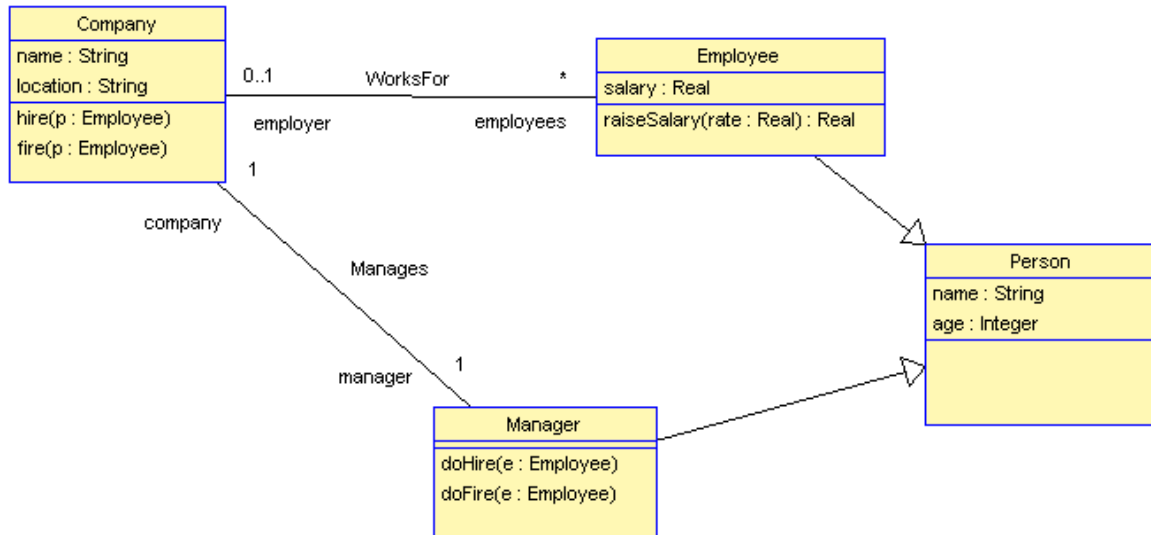
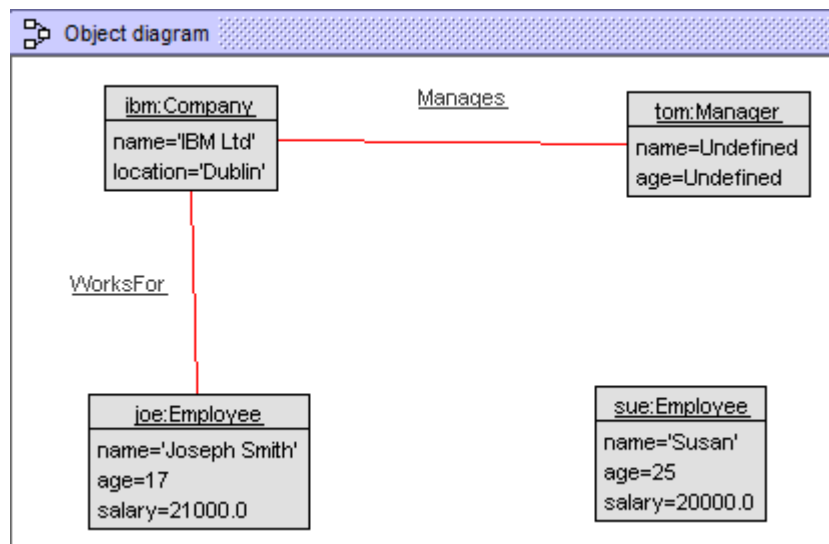


USE Lab Exercise

1. Write a USE specification of the follow class diagram. Then load it into USE to check that your USE code is correct.

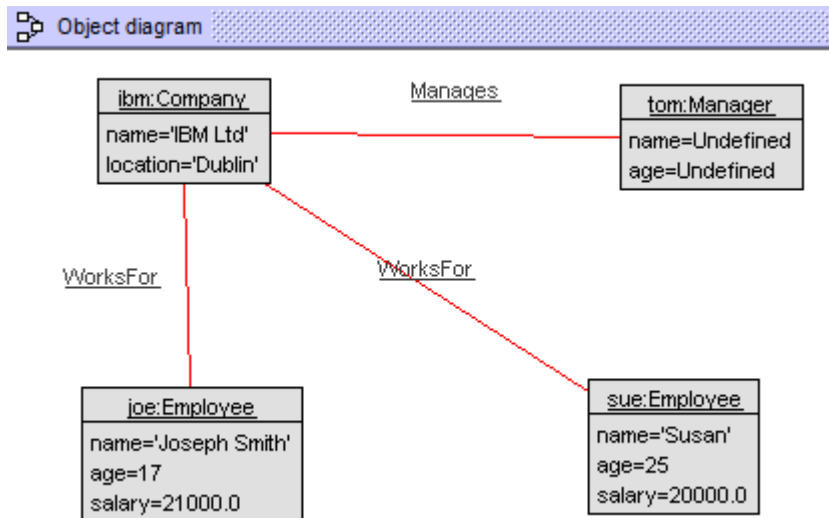


2. Then using either menu options or the command/terminal window, construct the following object model and save create/assignment commands in **employee.soil**. You can do this with menu **File | Save script (.soil)**.



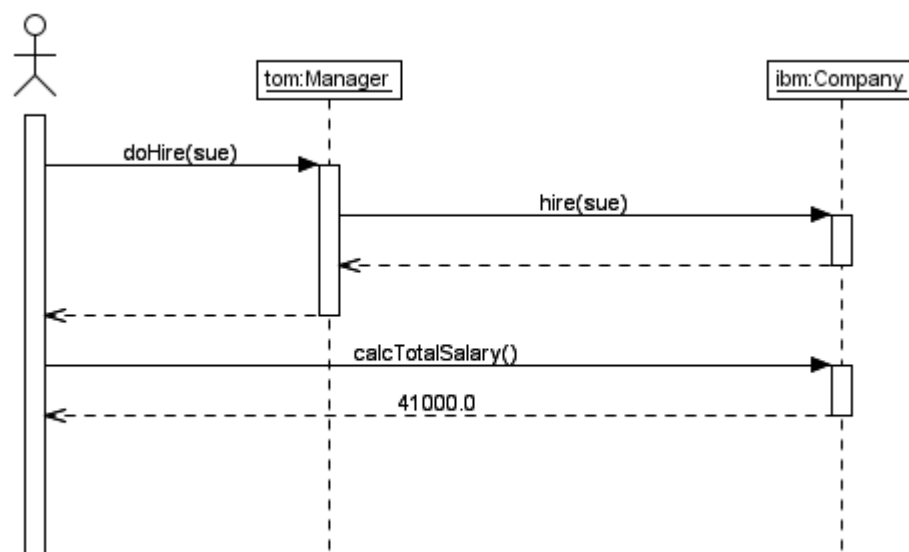
3. Implement in SOIL the **doHire(e : Employee)** and **hire(p : Employee)** operations.

4. If you succeed in step 3, execute the **doHire(p : Employee)** operation so that **tom** hires **sue** to get:



5. Add the operation **calcTotalSalary() : Real** to the class Company and implement it in SOIL and run it if you can. You may find this difficult. Save employee.use.

6. Create a sequence diagram view. Might look like:



7. Use the menu **File | Save protocol** and type the filename **employee.txt**. Examine the contents of **employee.txt**.