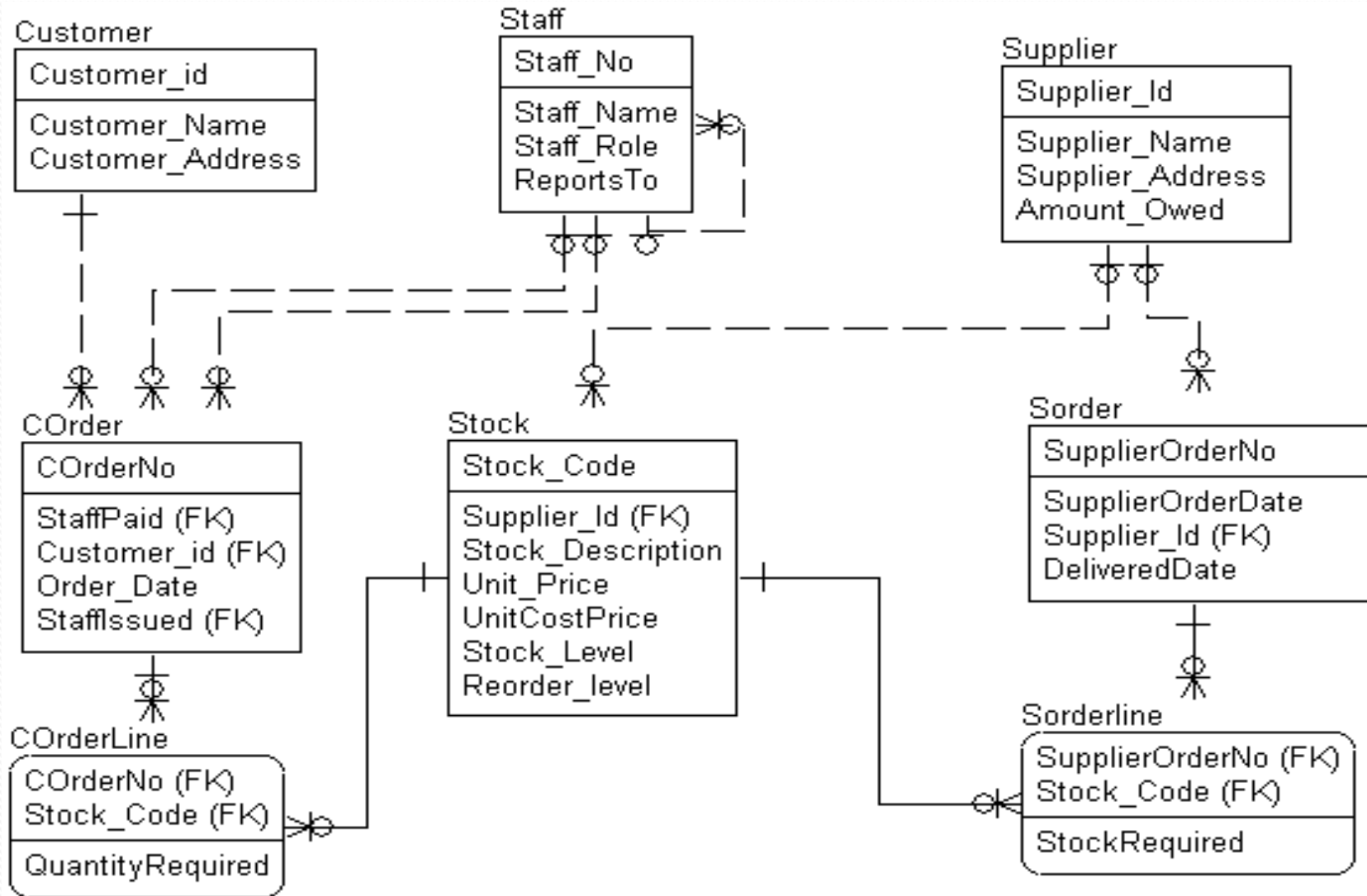


Lab 3

Multi-table queries

Tables in the Builder2 schema



Explanation

- Customer table represents the customers
- Staff table represents the staff
- Supplier table represents the suppliers
- Corder
 - This table represents the customer orders. The staff member who gets paid for the order is staffpaid and the staff member who issues the goods is staffissued.
- Corderline
 - There is one or more entries here for each corder. It represents a single stock code in the order.
- Sorder and Sorderline mirror this for supplier orders.

Using another schema

- There are two ways to select from another schema:

1. Point your session to the other schema

Alter session set current_schema = builder2;

- This solution allows you to act like a cuckoo in another schema, but only 1 at a time.

2. Prefix the table names with the schema name.

SELECT * FROM BUILDER2.STOCK;

- This solution allows you to stay in your own schema and select from several others.

Using BUILDER2...

1. Show the stock code, the stock description, the supplier id and the supplier name for all stock items.
2. Show the customerID and corderno of all customers who have orders.
3. Show the customer's Name and the name of any staff member who has issued an order for that customer.
4. Repeat 3 using the 'distinct' keyword straight after the word select. Is there a difference in the number of rows?
5. Show the customer name and the description of each product the customer has ordered.
 - *Look at the number of rows. There should only be the same number of rows as there are in the corderline table. If not, you've missed a join!*
6. Return the name and number of orders placed by each customer who has placed an order.