

Practicing SQL

A refresher course

INSERTs

- Have seen and used:
 - INSERT into *table* VALUES (v1,...,vn);
 - INSERT into *table(a1,...,am)* VALUES (v1,...,vm);
- Can also:
 - INSERT INTO *table [(column-list)]*
SELECT ...

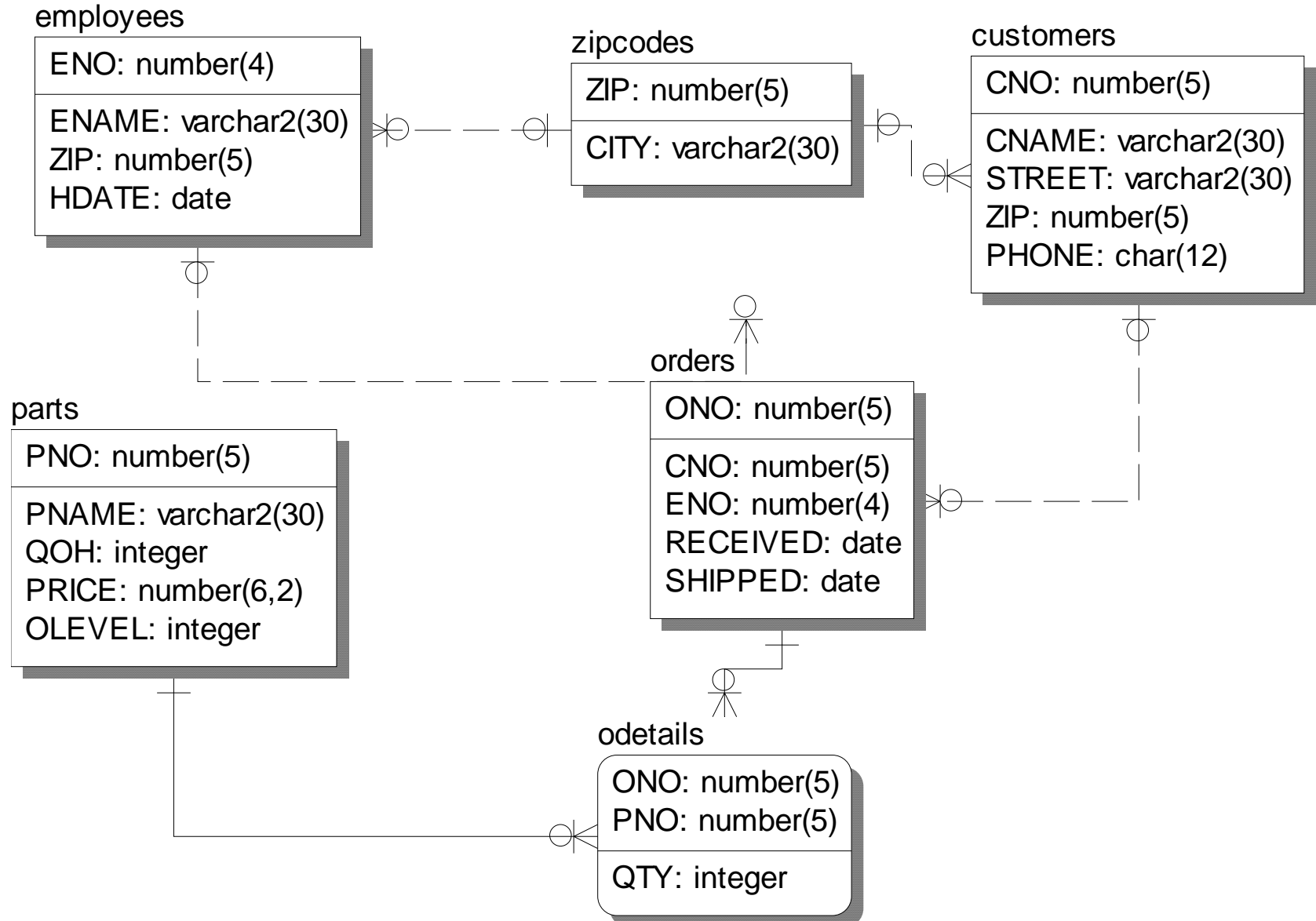
UPDATEs

UPDATE table-name

SET a1 = v1, a2=v2,...

WHERE condition

Using the following data model...



And the following schema

- Tennis on ferdia (Host string Oracledb).
 - This schema has the tables already created, with some data already there.
 - Check what's there already, so you don't clash with it.
- By now, you should have your own Oracle accounts.
 - If not, ask, and you will be given an account that allows you to access this one.

Do the following...

- Populate the tables, as directed by the [handout](#).
- Answer the queries listed.
 - NB: There is no need to answer all queries.
 - I will divide the queries among you.
- If you do not have sufficient data to satisfy the queries, add more.