

Downloading & Installing Oracle Data Modeler

1. The following is the link to where you can download Oracle Data Modeler. To perform the download you will need an account on Oracle Technology Network. So if you don't have one then you will need to create an account for yourself.

<http://www.oracle.com/technology/software/products/sql/datamodeler.html>

Select the first option that includes the JRE and is approx. 57M

Save this file to your hard disk.

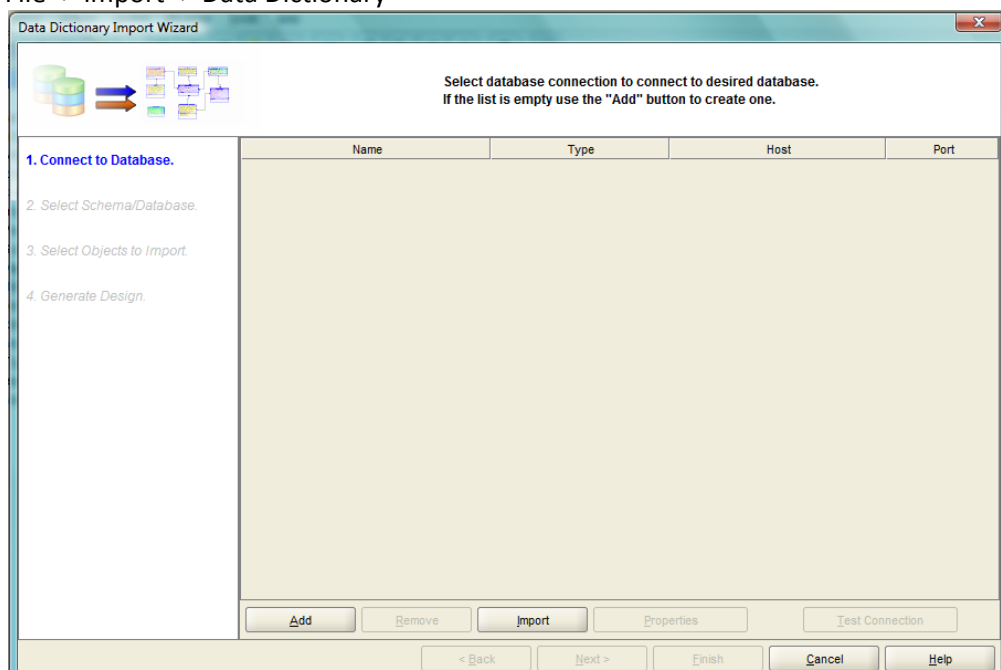
2. Create a directory on your PC. You will unzip the downloaded file into this directory
C:\Oracle Data Modeler
3. Unzip the download file into this directory. There is no install or setup to run. (This is an unzip not an install so there will be no link on your star-menu)
4. The executable for Oracle Data Modeler is
C:\Oracle Data Modeler\datamodeler\datamodeler.exe
5. Create a shortcut for this executable and put it on your desktop
6. To run Oracle Data Modeler double click on the shortcut you have just created
7. You are now ready to start creating your ER diagrams
8. View the online demonstration on how to create a simple Relational Mode

http://download.oracle.com/otn_hosted_doc/datamodeler/demos/IntroDataModel/IntroDataModel.html

approx. 5 minutes long

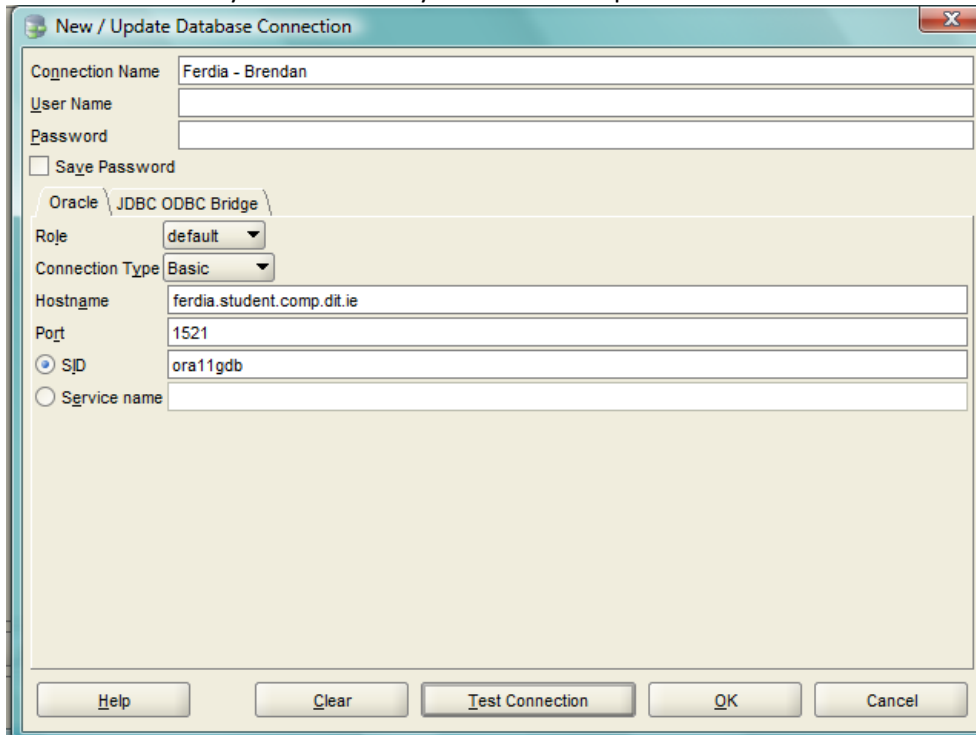
How to reverse engineer a data model from your Oracle Schema

1. From the menu select
File -> Import -> Data Dictionary



Downloading & Installing Oracle Data Modeler

2. Click on the Add button and enter the connection details for your Oracle schema. This is the same as the connection details you created for your SQL Developer connection



New / Update Database Connection

Connection Name: Ferdia - Brendan

User Name: _____

Password: _____

Save Password

Oracle \ JDBC ODBC Bridge

Role: default

Connection Type: Basic

Hostname: ferdia.student.comp.dit.ie

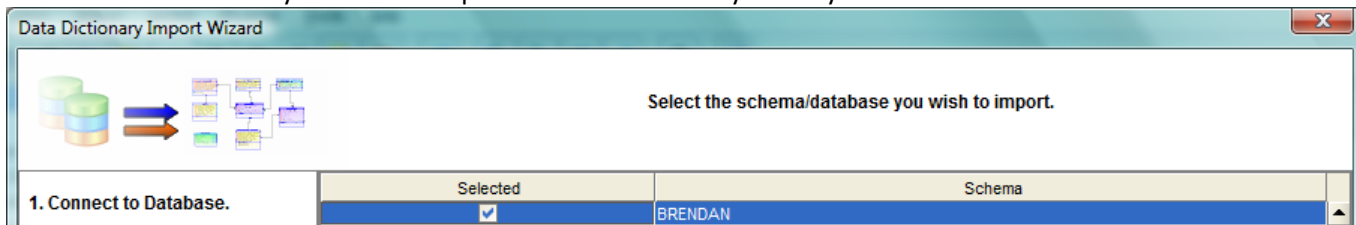
Port: 1521

SID: ora11gdb

Service name: _____

Buttons: Help, Clear, Test Connection, OK, Cancel

3. Test your connection to make sure that all the details are correct and that a connection can be made to the Oracle database
4. Click on the Next button
5. Select the schema that you want to import. **IMPORTANT:** Only select your own schema



Data Dictionary Import Wizard

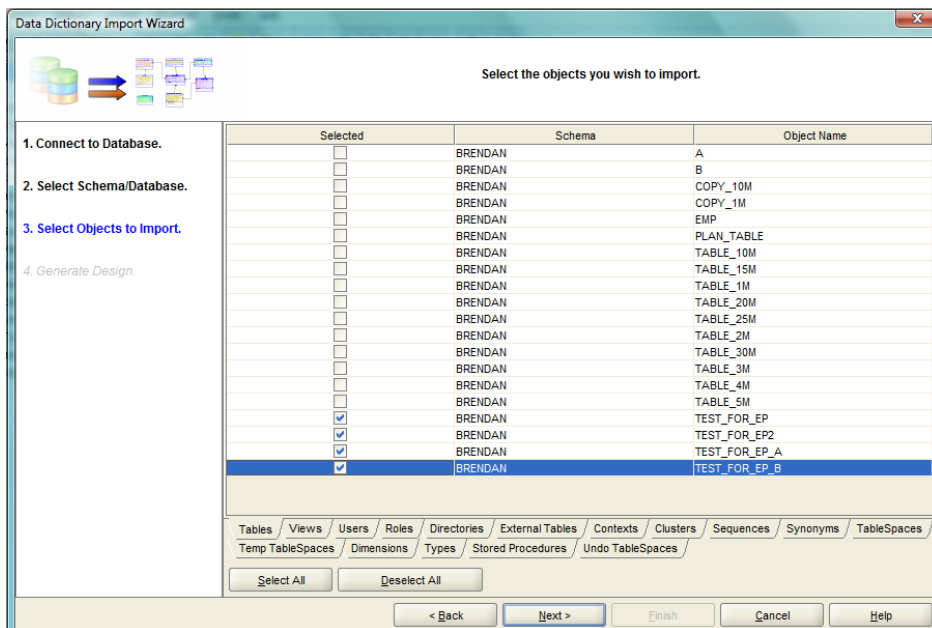
Select the schema/database you wish to import.

1. Connect to Database. | Selected | Schema

Selected	Schema
<input checked="" type="checkbox"/>	BRENDAN

6. Click the Next Button
7. Select the objects (tables) you wish to import into your ER diagram. Your schema may contain lots of tables. Only import the tables that you want.

Downloading & Installing Oracle Data Modeler



8. Click the Next button and then the Finish button
9. The ER diagram will now be generated and displayed on your screen
10. Save your model. File -> Save
 - a. Give it a meaningful name
 - b. Give the directory
 - c. The model will be stored in an xml file

Useful Links

Getting Started

- ❑ [Release Notes](#)
- ❑ [Feature List](#)
- ❑ [Documentation](#)
- ❑ [Frequently Asked Questions](#)
- ❑ [Statement of Direction](#)

Data Sheets, White Papers and Articles

- ❑ [Data Sheet \(pdf\)](#)
- ❑ [Data Modeler Overview](#) (Technical white paper - pdf)
- ❑ [General Overview](#) (Presentation - pdf)
- ❑ [Naming Standards](#) (Technical white paper - pdf)

Tutorials

- ❑ [Adding a Table to an Existing Database](#)
- ❑ [Modifying a Logical Model Using Inheritance and Object Types](#)
- ❑ [Generating a Multi-Dimensional Model](#)
- ❑ [Reviewing your Oracle SQL Developer Data Modeler Design](#)

Online Demonstrations

- ❑ [Creating a Basic Relational Model](#) (Learn about Name Templates)
- ❑ [Import DDL to Create a Relational Model](#) (See the Merge Swap Dialog)
- ❑ [Import from the Data Dictionary](#) (Review Logical and Physical Models)

<http://www.oracle.com/technology/products/database/datamodeler/index.html>

Oracle Data Modeler Documentation - online

http://download.oracle.com/docs/cd/E15276_01/doc.20/e13677/toc.htm